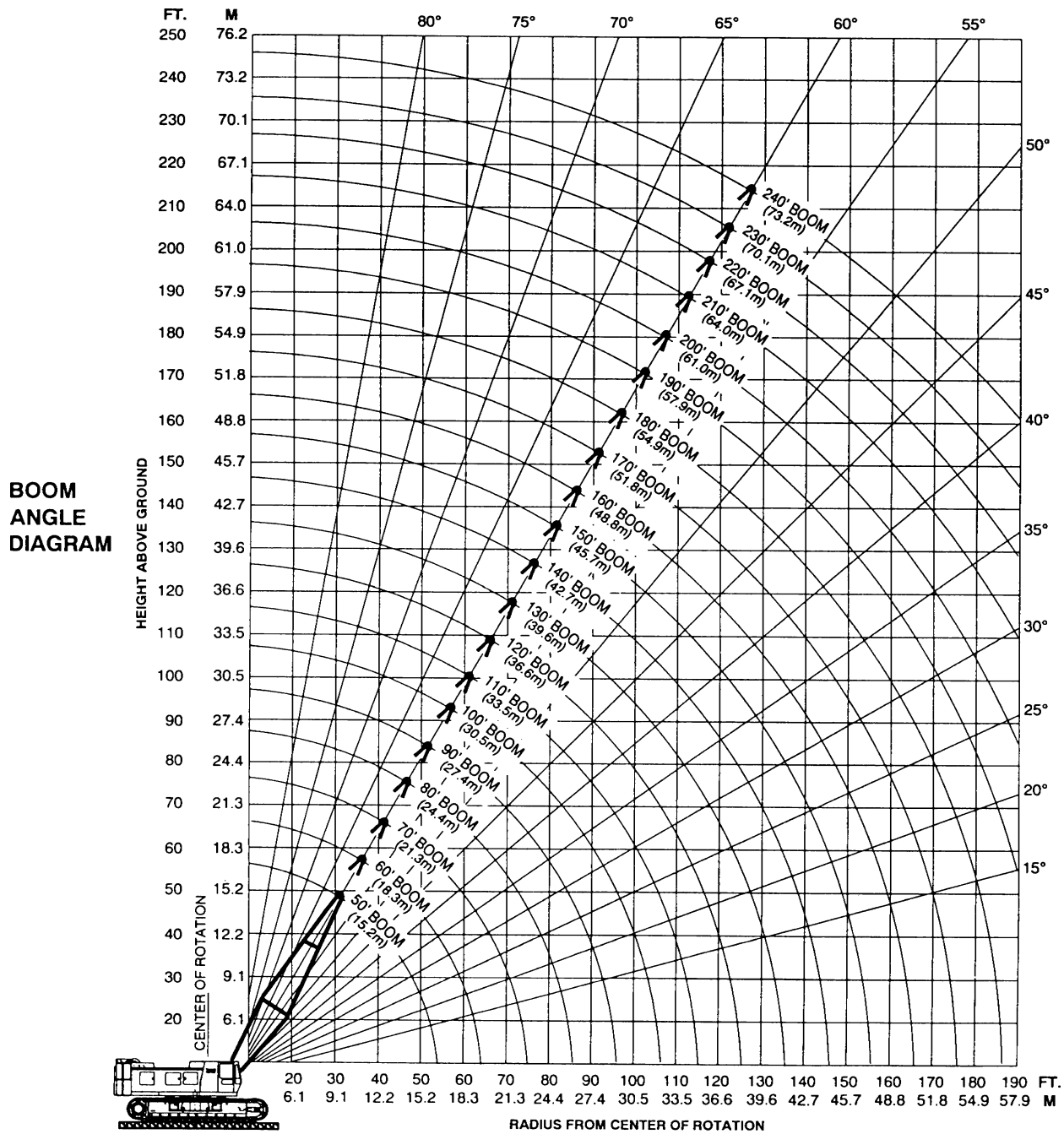


# AMERICAN MODEL HC 125WH WORKING RANGES



For more information, product demonstration, or details on sales, lease and rental plans, please contact your local Terex American Crane Distributor.

We reserve the right to amend these specifications at any time without notice. The only warranty applicable is our standard written warranty applicable to the particular product and sale. We make no other warranty, expressed or implied.

Montgomery Cranes  
Sales and Rentals  
972-790-2400

**TEREX CRANES**

AMERICAN CRANE CORPORATION  
202 Raleigh Street • Wilmington, NC 28412 USA  
(910) 395-8500 • FAX: (910) 395-8538

# LOAD HOISTING INFORMATION

Maximum Lifting Capacity in Pounds	Minimum Parts of Line	Maximum Hoisting Distance in Feet	
		Main (Front)	Aux. (rear)
250,000	9	160	160
236,000	8	180	180
206,500	7	200	200
177,000	6	240	240
147,500	5	290	290
118,000	4	360	360
88,500	3	480	480
59,000	2	730	730
29,500	1	1,460	1,460

Maximum Lifting Capacity in Kilograms	Minimum Parts of Line	Maximum Hoisting Distance in Meters	
		Main (Front)	Aux. (rear)
113,400	9	49	49
107,049	8	55	55
93,668	7	61	61
80,287	6	73	73
66,906	5	88	88
53,524	4	110	110
40,143	3	146	146
26,762	2	223	223
13,381	1	445	445

# BOOM COMPOSITION CHART

Boom Length		25' (7.6 M) 59H Inner	10' (3.0 M) 59H Center	20' (6.1 M) 59H Center	40' (12.2 M) 59H Center	25' (7.6 M) 59H Outer
Feet	Meters					
50	15.2	1	0	0	0	1
60	18.3	1	1	0	0	1
70	21.3	1	0	1	0	1
80	24.4	1	1	1	0	1
90	27.4	1	0	0	1	1
100	30.5	1	1	0	1	1
110	33.5	1	0	1	1	1
120	36.6	1	1	1	1	1
130	39.6	1	0	0	2	1
140	42.7	1	1	0	2	1

Boom Length		25' (7.6 M) 59H Inner	10' (3.0 M) 59H Center	20' (6.1 M) 59H Center	40' (12.2 M) 59H Center	25' (7.6 M) 59H Outer
Feet	Meters					
150	45.7	1	0	1	2	1
160	48.8	1	1	1	2	1
170	51.8	1	0	0	3	1
180	54.9	1	1	0	3	1
190	57.9	1	0	1	3	1
200	61.0	1	1	1	3	1
210	64.0	1	0	0	4	1
220	67.1	1	1	0	4	1
230	70.1	1	0	1	4	1
240	73.2	1	1	1	4	1

# MAXIMUM BOOM & JIB SELF-ERECTION DATA

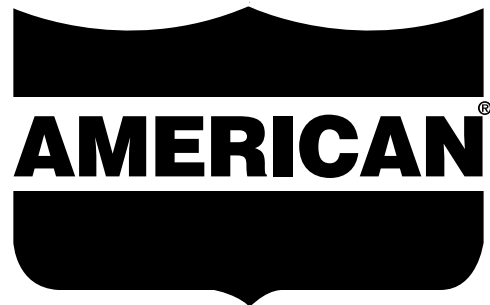
Jib	Over the End				Over the Side			
	Boom Length		Jib Length		Boom Length		Jib Length	
	Feet	Meters	Feet	Meters	Feet	Meters	Feet	Meters
#9HL	240	73.2	0	0.0	230	70.1	0	0.0
	230	70.1	40	12.2	220	67.1	0	0.0
	220	67.1	80	24.4	210	64.0	40	12.2
	—	—	—	—	200	61.0	50	15.2
	—	—	—	—	190	57.9	60	18.3
	—	—	—	—	180	54.9	70	21.3

# WEIGHTS

	LBS.	KG
Lifting Crane with standard counterweight, 50' (15.2 mm) boom with offset tip, transport package, 3rd drum and 38" (965 mm) shoes .....	209,740	95,137
Lifting crane equipped as above and 44" (1,117 mm) shoes .....	213,030	96,629
Counterweight Including: .....	52,150	23,665
Basic .....	31,000	14,061
Overlay .....	20,000	9,072
2 Removal Cylinders .....	1,150	522
Crane boom outer (six sheave) .....	3,260	1,480
Crane boom inner (and misc.) .....	4,345	1,971
Crawler side frames 38" (965 mm) shoes .....	70,590	32,020
Crawler Side Frames 44" (1,117 mm) shoes ..	73,880	33,500
Travel weight includes upper, carbody, transportation package, boom inner, counterweight handling sheaves and third drum .....	83,740	37,985
Second swing motor .....	580	263

# GROUND PRESSURES

Lifting crane with 50 ft. (15.2 mm) boom with offset tip and standard counterweight.	
38" (965 mm) shoes 10.5 PSI	44" (1,117 mm) shoes 9.03 PSI





## LIFT RATINGS IN POUNDS (continued)

With 59H Open Throat Boom, 24' Floating Mast and 51,000 Pound Counterweight Fully Extended

Boom & Mast Length	Radius Feet	Boom Angle Degrees	Side Frames Retracted Pounds	Side Frames Extended Pounds	From Boom Pt. to Ground Feet	Boom & Mast Length	Radius Feet	Boom Angle Degrees	Side Frames Retracted Pounds	Side Frames Extended Pounds	From Boom Pt. to Ground Feet	Boom & Mast Length	Radius Feet	Boom Angle Degrees	Side Frames Retracted Pounds	Side Frames Extended Pounds	From Boom Pt. to Ground Feet	
190' Boom	34	81.0	55,980*	55,980*	194	210' Boom	38	80.7	43,610*	43,610*	214	230' Boom	41	80.8	34,060*	34,060*	234	
	35	80.7	55,700*	55,700*	194		40	80.2	43,270*	43,270*	214		50	78.5	32,230*	32,230*	232	
	40	79.1	54,110	54,810*	193		50	77.4	39,730	40,510*	212		60	75.9	29,760*	29,760*	230	
	50	76.0	40,190	47,470	191		60	74.6	30,970	36,610	209		70	73.4	24,780	26,690*	227	
	60	72.9	31,440	37,060	188		70	71.7	25,240	29,530	206		80	70.7	20,380	24,230	224	
	70	69.7	25,690	29,990	185		80	68.8	20,850	24,690	202		90	68.1	17,030	20,350	220	
	80	66.5	21,300	25,120	181		90	65.9	17,510	20,820	198		100	65.4	14,390	17,310	216	
	90	63.1	17,960	21,260	176		100	62.8	14,870	17,780	193		110	62.6	12,270	14,860	211	
	100	59.7	15,340	18,230	170		110	59.7	12,750	15,340	188		120	59.7	10,520	12,860	205	
	110	56.1	13,220	15,800	164		120	56.5	11,010	13,340	182		130	56.8	9,060	10,990*	199	
	120	52.4	11,480	13,800	157		130	53.1	9,540	11,660	174		140	53.8	7,810	9,270*	192	
	130	48.5	10,010	12,120	149		140	49.6	8,300	10,140*	166		150	50.6	6,730	7,810*	184	
	140	44.3	8,760	10,700	139		150	46.0	7,230	8,670*	157		160	47.3	5,800	6,540	175	
	150	39.8	7,700	9,410*	128		160	42.0	6,300	7,390*	147		170	43.8	4,980	5,430*	165	
	160	34.8	6,770	8,120*	115		170	37.7	5,490	6,270*	135		180	40.0	4,260	4,470*	154	
	170	29.0	5,960	6,970*	98		180	33.0	4,770	5,290*	121		190	36.0	3,630	3,630*	141	
	180	21.9	5,240	5,960*	77		190	27.5	4,130	4,420*	103		200	31.5	2,870*	2,870*	126	
	190	11.2	4,610	5,040*	43		200	20.8	3,560	3,650*	81		210	26.3	2,210*	2,210*	108	
200' Boom	36	80.8	49,280*	49,280*	204	220' Boom	39	80.9	38,720*	38,720*	224	240' Boom	42	80.9	29,830*	29,830*	244	
	40	79.7	48,570*	48,570*	203		40	80.6	38,510*	38,510*	224		50	79.0	27,070*	27,070*	242	
	50	76.7	39,950	45,540*	201		50	78.0	35,940*	35,940*	222		60	76.5	25,030*	25,030*	240	
	60	73.8	31,200	36,830	199		60	75.3	30,730	33,690*	219		70	74.1	22,350*	22,350*	237	
	70	70.8	25,440	29,750	195		70	72.6	25,000	29,290	217		80	71.6	20,140	21,080*	234	
	80	67.7	21,060	24,900	192		80	69.8	20,610	24,460	213		90	69.0	16,780	19,180*	231	
	90	64.6	17,710	21,010	187		90	67.0	17,260	20,570	209		100	66.4	14,150	17,070	227	
	100	61.3	15,080	17,980	182		100	64.2	14,630	17,540	205		110	63.8	12,010	14,610	222	
	110	58.0	12,960	15,550	176		110	61.2	12,510	15,100	199		120	61.1	10,260	12,500*	217	
	120	54.6	11,220	13,540	169		120	58.2	10,750	13,080	193		130	58.3	8,790	10,480*	211	
	130	51.0	9,750	11,870	162		130	55.1	9,280	11,380*	187		140	55.5	7,540	8,770*	204	
	140	47.2	8,500	10,440*	153		140	51.8	8,040	9,660*	179		150	52.5	6,470	7,310*	197	
	150	43.1	7,440	8,960*	143		150	48.4	6,970	8,190*	171		160	49.5	5,540	6,050*	189	
	160	38.7	6,500	7,670*	131		160	44.8	6,040	6,920*	161		170	46.2	4,720	4,960*	180	
	170	33.8	5,690	6,550*	118		170	41.0	5,230	5,820*	151		180	42.8	4,000	4,000*	169	
	180	28.3	4,980	5,580*	101		180	36.8	4,500	4,850*	138		190	39.2	3,160*	3,160*	158	
	190	21.4	4,340	4,700*	79		190	32.2	3,860	3,990*	124		200	35.2	2,410*	2,410*	145	
	200	10.9	3,780	3,910*	144		200	26.9	3,240*	3,240*	106		210	30.8	1,760*	1,760*	129	
						210	20.4	2,570*	2,570*	83	220	25.7	1,170*	1,170*	110			
						220	10.4	1,970*	1,970*	46								

## LIFT RATINGS IN KILOGRAMS

With 59H Open Throat Boom, 7.3M Floating Mast and 23,134 Kg Counterweight Fully Extended

Boom & Mast Length	Radius Meters	Boom Angle Degrees	Side Frames Retracted Kilograms	Side Frames Extended Kilograms	From Boom Pt. to Ground Meters	Boom & Mast Length	Radius Meters	Boom Angle Degrees	Side Frames Retracted Kilograms	Side Frames Extended Kilograms	From Boom Pt. to Ground Meters	Boom & Mast Length	Radius Meters	Boom Angle Degrees	Side Frames Retracted Kilograms	Side Frames Extended Kilograms	From Boom Pt. to Ground Meters	
15.2 M Boom	3.7	81.0	113,400*	113,400*	17	18.3 M Boom	4.3	80.6	107,140*	107,140*	20	21.3 M Boom	4.9	80.3	92,160	93,700*	23	
	4.0	79.7	113,400*	113,400*	17		4.5	79.8	101,620*	101,620*	20		5.0	79.9	88,440	91,420*	23	
	4.5	77.8	101,670*	101,670*	17		5.0	78.2	88,430	91,470*	20		5.5	78.6	75,990	83,080*	23	
	5.0	75.8	88,390	91,510*	17		5.5	76.6	75,970	83,130*	20		6.0	77.2	66,570	76,180*	23	
	5.5	73.8	75,960	83,170*	17		6.0	75.0	66,560	76,220*	20		7.0	74.4	53,230	65,310*	23	
	6.0	71.9	66,550	76,260*	17		7.0	71.7	53,230	65,340*	19		8.0	71.6	44,220	53,770	22	
	6.0	67.8	53,230	65,380*	16		8.0	68.4	44,230	53,780	19		9.0	68.7	37,780	45,410	22	
	7.0	63.7	44,240	53,770	16		9.0	64.9	37,790	45,400	19		10.0	65.8	32,890	39,240	21	
	8.0	63.7	44,240	53,770	16		10.0	61.4	32,900	39,230	18		11.0	62.8	29,080	34,460	21	
	9.0	59.4	37,800	45,400	15		11.0	57.7	29,090	34,460	17		12.0	59.7	26,050	30,690	20	
	10.0	54.9	32,920	39,230	14		12.0	53.9	26,060	30,690	17		13.0	56.5	23,540	27,620	20	
	11.0	50.1	29,120	34,480	14		13.0	49.9	23,550	27,620	16		14.0	53.2	21,440	25,120	19	
	12.0	44.9	26,070	30,700	13		14.0	45.6	21,450	25,110	15		15.0	49.8	19,660	22,970	18	
	13.0	39.2	23,560	27,640	12		15.0	41.0	19,670	22,970	14		16.0	46.1	18,130	21,140	17	
	14.0	32.7	21,470	25,120	10		16.0	35.9	18,130	21,140	13		17.0	42.2	16,810	19,570	16	
	15.0	24.7	19,670	22,960	8		17.0	30.0	16,810	19,560	11		18.0	38.0	15,640	18,190	15	
								18.0	22.8	15,640	18,180		9	19.0	33.4	14,620	16,980	14
															20.0	28.0	13,700	15,910